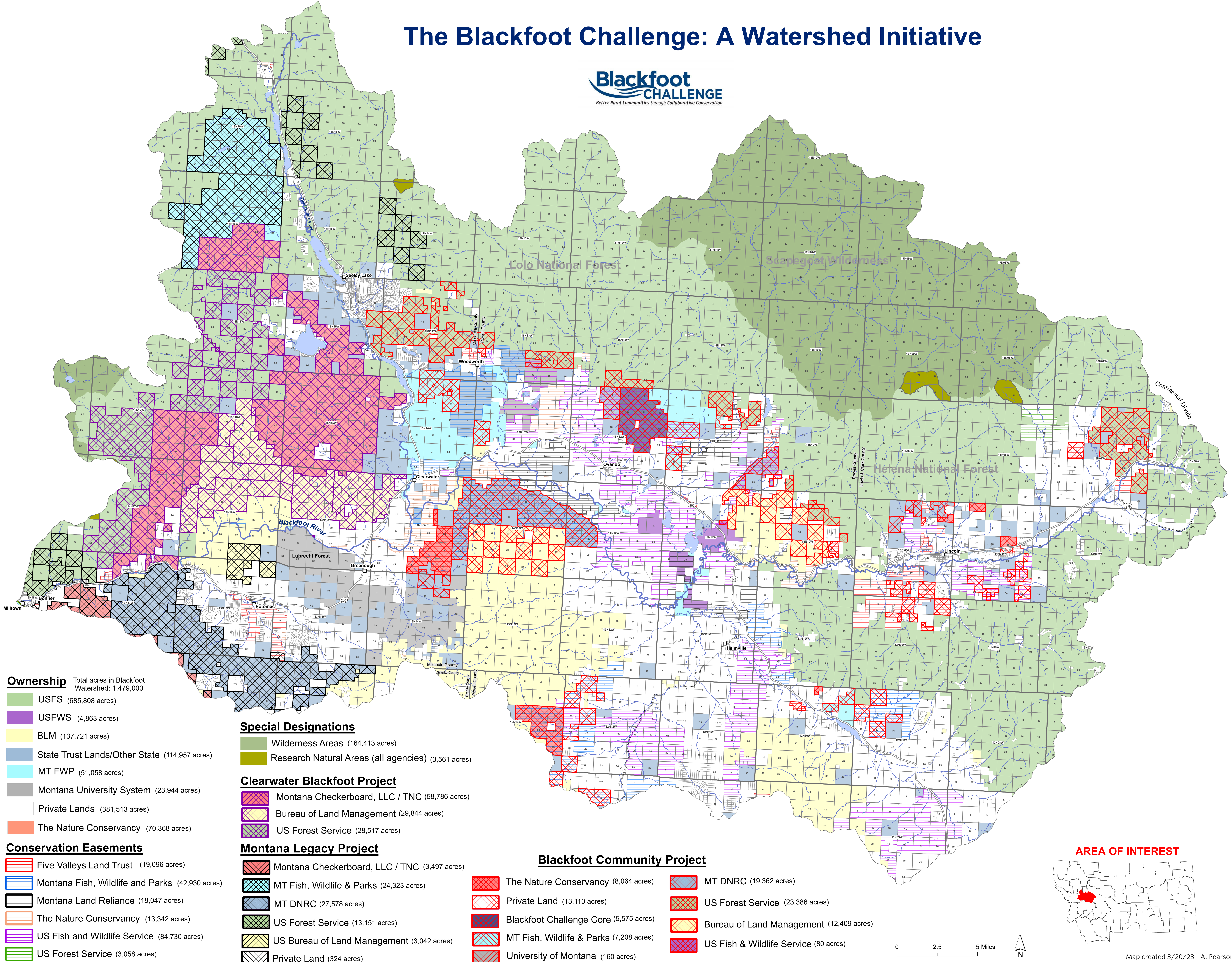


The Blackfoot Challenge: A Watershed Initiative



Ownership

- Total acres in Blackfoot Watershed: 1,479,000
- USFS (685,808 acres)
 - USFWS (4,863 acres)
 - BLM (137,721 acres)
 - State Trust Lands/Other State (114,957 acres)
 - MT FWP (51,058 acres)
 - Montana University System (23,944 acres)
 - Private Lands (381,513 acres)
 - The Nature Conservancy (70,368 acres)

Conservation Easements

- Five Valleys Land Trust (19,096 acres)
- Montana Fish, Wildlife and Parks (42,930 acres)
- Montana Land Reliance (18,047 acres)
- The Nature Conservancy (13,342 acres)
- US Fish and Wildlife Service (84,730 acres)
- US Forest Service (3,058 acres)

Special Designations

- Wilderness Areas (164,413 acres)
- Research Natural Areas (all agencies) (3,561 acres)

Clearwater Blackfoot Project

- Montana Checkerboard, LLC / TNC (58,786 acres)
- Bureau of Land Management (29,844 acres)
- US Forest Service (28,517 acres)

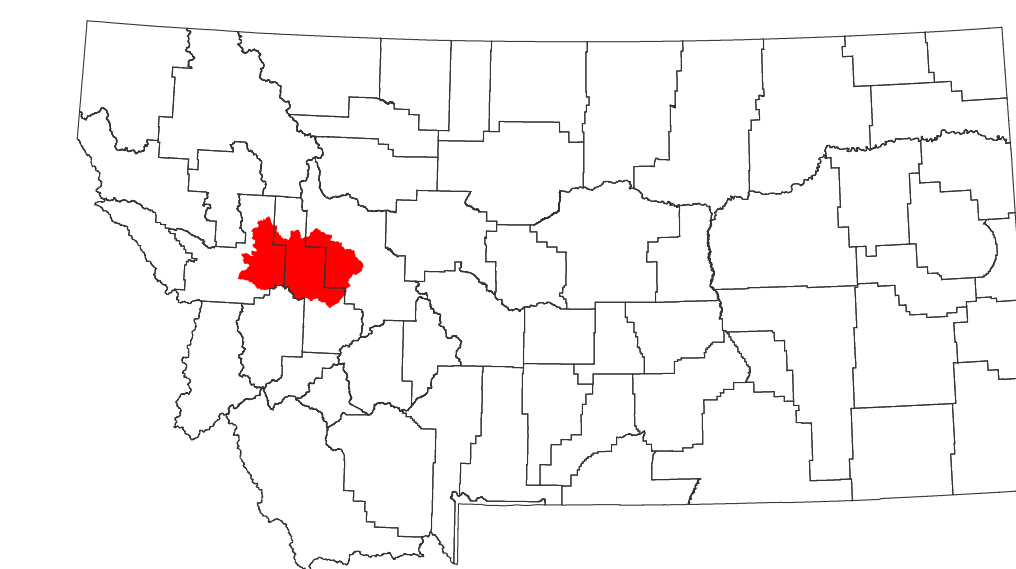
Montana Legacy Project

- Montana Checkerboard, LLC / TNC (3,497 acres)
- MT Fish, Wildlife & Parks (24,323 acres)
- MT DNRC (27,578 acres)
- US Forest Service (13,151 acres)
- US Bureau of Land Management (3,042 acres)
- Private Land (324 acres)

Blackfoot Community Project

- The Nature Conservancy (8,064 acres)
- Private Land (13,110 acres)
- Blackfoot Challenge Core (5,575 acres)
- MT Fish, Wildlife & Parks (7,208 acres)
- University of Montana (160 acres)
- MT DNRC (19,362 acres)
- US Forest Service (23,386 acres)
- Bureau of Land Management (12,409 acres)
- US Fish & Wildlife Service (80 acres)

AREA OF INTEREST



0 2.5 5 Miles

