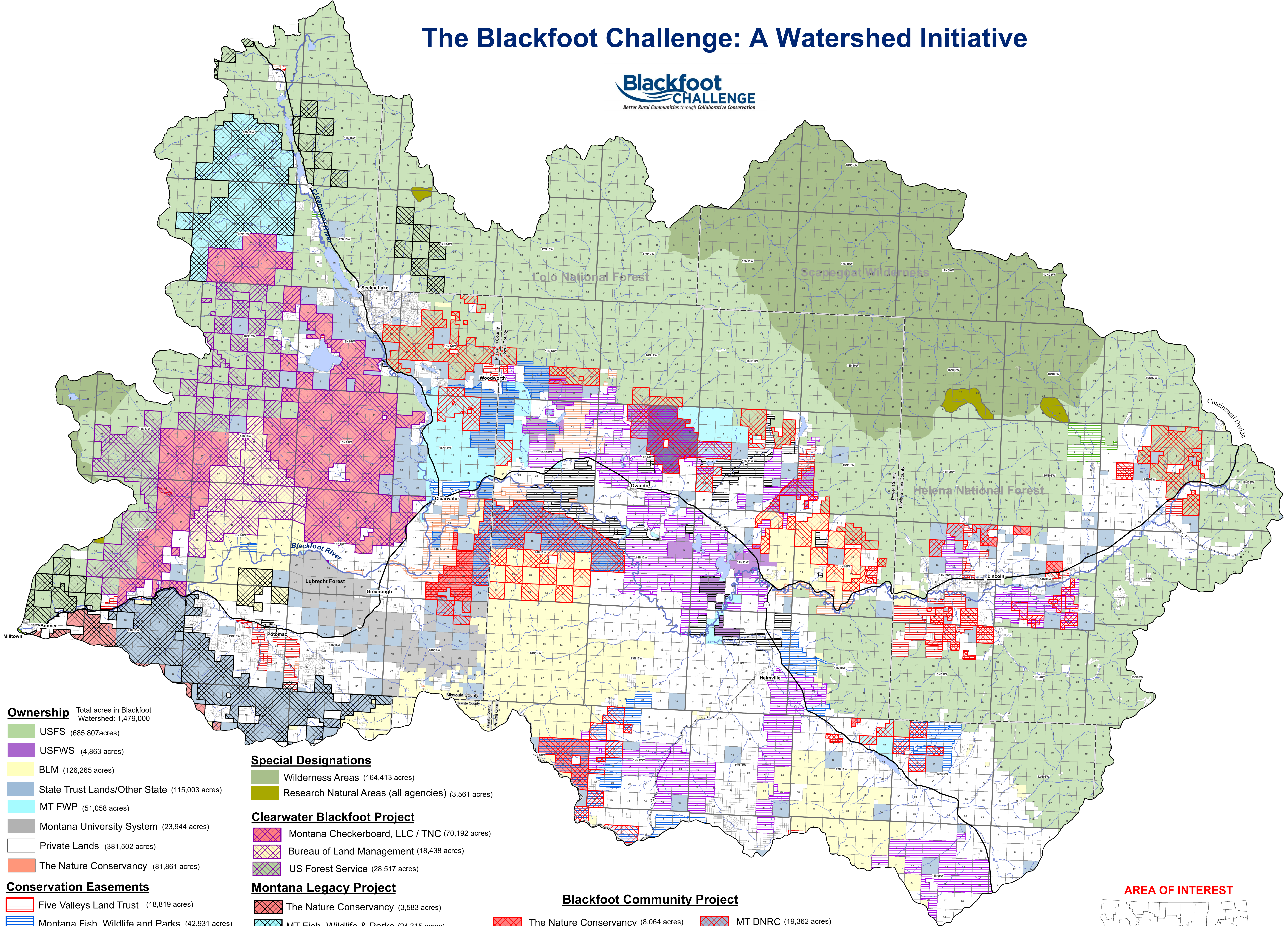


# The Blackfoot Challenge: A Watershed Initiative



**Ownership** Total acres in Blackfoot Watershed: 1,479,000

- USFS (685,807 acres)
- USFWS (4,863 acres)
- BLM (126,265 acres)
- State Trust Lands/Other State (115,003 acres)
- MT FWP (51,058 acres)
- Montana University System (23,944 acres)
- Private Lands (381,502 acres)
- The Nature Conservancy (81,861 acres)

**Special Designations**

- Wilderness Areas (164,413 acres)
- Research Natural Areas (all agencies) (3,561 acres)

**Clearwater Blackfoot Project**

- Montana Checkerboard, LLC / TNC (70,192 acres)
- Bureau of Land Management (18,438 acres)
- US Forest Service (28,517 acres)

**Montana Legacy Project**

- The Nature Conservancy (3,583 acres)
- MT Fish, Wildlife & Parks (24,315 acres)
- MT DNRC (27,578 acres)
- US Forest Service (13,151 acres)
- US Bureau of Land Management (3,042 acres)
- Private Land (237 acres)

**Blackfoot Community Project**

- The Nature Conservancy (8,064 acres)
- Private Land (13,110 acres)
- Blackfoot Challenge Core (5,575 acres)
- MT Fish, Wildlife & Parks (7,208 acres)
- University of Montana (160 acres)
- MT DNRC (19,362 acres)
- US Forest Service (23,386 acres)
- Bureau of Land Management (12,409 acres)
- US Fish & Wildlife Service (80 acres)

**AREA OF INTEREST**

